



ADAM HALLIWELL POWERED BY **exp** TM UK

@ adam.halliwell@exp.uk.com

adamhalliwell.exp.uk.com

☎ 01242 906 586

Shutter Lane, Gotherington, Cheltenham, GL52

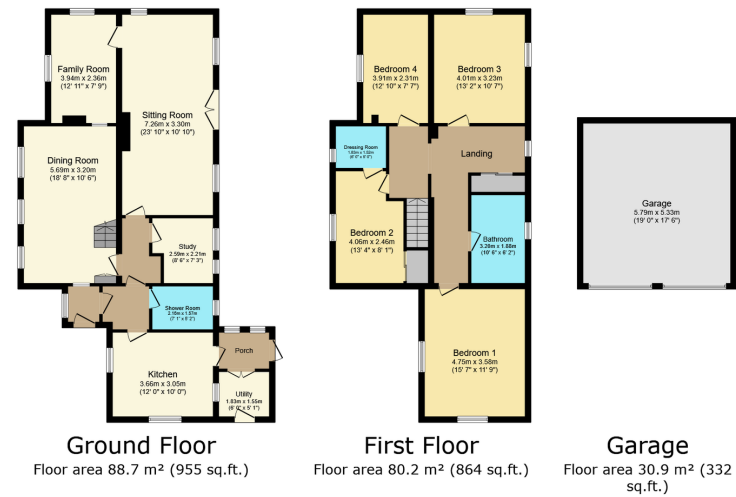
£750,000

🛏️ 4 🚿 2 🚗 4



- Please quote ref AH0137
- Detached house
- Quarter acre plot
- No onward chain
- Four bedrooms
- Four reception rooms
- Double garage
- Requires modernisation
- Ample parking
- Wonderful country lane location





This floor plan is for illustrative purposes only. It is not drawn to scale. Any measurements, floor areas (including any total floor area), openings and orientations are approximate. No details are guaranteed, they cannot be relied upon for any purpose and do not form any part of any agreement. No liability is taken for any error, omission or misstatement. A party must rely upon its own inspection(s). Powered by www.propertybox.io

For sale is a characterful, detached house in a peaceful village location, featuring over 1800 square feet of living space, four double bedrooms, four reception rooms, a spacious quarter of an acre plot, and a double garage, with excellent potential for modernisation and personalisation.

Score	Energy rating	Current	Potential
92+	A		
81-91	B		
69-80	C		74 C
55-68	D		
39-54	E	47 E	
21-38	F		
1-20	G		